



Case History

Corrosion Under Insulation (CUI)

An Oil Major Sable

The Challenge

Industry guidelines suggest that insulated components in a marine environment may suffer from significant CUI within the first 5-10 years of operation.

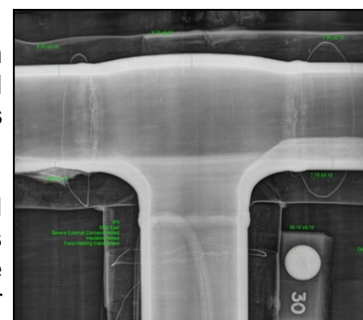
Recommended practice is to remove the insulation on critical lines for a thorough inspection. This task would have been extremely difficult for the Oil Major operating a gas field offshore Atlantic Canada where weather and the presence of unmanned installations created safety, logistics, POB and operational difficulties.

The Oil Major had planned a maintenance and repair campaign that included a support vessel in the field. The challenge was to provide a service that identified, prioritised and reduced the integrity risk of the insulated components with minimum HSE risk and operational disruption.

The Solution

EM&I Stantec proposed a solution whereby our onshore asset integrity team analysed the CUI risk and developed a criticality ranking which identified equipment at risk of CUI which was also highly important to the Operators business.

EM&I Stantec gathered a multiskilled site team from within the EM&I global alliance, who were competent NDT inspectors, insulators and coating specialists with rope access capability. Their unique combination of skills eliminated the need for a scaffolding team which reduced POB and the number of helicopter flights, thus reducing HSE risk and cost.



Digital Radiography Image of CUI

The team's task was to inspect the high risk equipment, remove insulation where required, apply remedial coatings where necessary and feedback condition data to EM&I Stantec's onshore engineers. The onshore engineers then assessed equipment fitness-for-service and used this information to make recommendations to the Operator for ongoing inspection, maintenance and repair programmes.



Rope Access Inspection & Maintenance Teams

The outcome was that An Oil Major was able to manage the integrity of their assets with minimised HSE risk and optimised cost in time for the barge campaign.