

## WrapSight™ - Temporary Repair Inspection & Management

Patent pending - Please refer to [www.emialliance.com](http://www.emialliance.com) for patent information

### The Challenge

Corrosion and other anomalies on piping are often temporarily repaired with various types of composite wraps. The 'wrapped' repairs are difficult to inspect, resulting in a requirement for a permanent repair by a due date, irrespective of the integrity of the temporary repair.

This work normally requires a plant shutdown with consequential additional POB, cost and operational disruption.

### The Solution

A unique inspection technique has been developed and class approved which enables the integrity of the temporary repair to be assessed whilst in-service.

The WrapSight™ methodology developed by Inversa and EM&I uses a combination of advanced NDT methods including Backscatter Computed Tomography (BCT) to determine the condition of the repair material and the underlying piping. A prioritised Inspection Plan optimises cost, operational efficiency and programme.

The complete Temporary Repair Management Service comprises, Temporary Repair Register (set-up and management), Risk Based Inspection Plan, In-service Inspections, Reports with Recommendations, Repair Supervision and Close Out Inspection Report for compliance certification.

### The Benefits

WrapSight avoids unnecessary repairs saving at least 25% of the overall programme cost.

WrapSight inspections are carried out during normal operations and the results used to improve shutdown planning and reduce POB.

WrapSight is ABS approved and supports a compliant Temporary Repair Management programme.

### Track Record

We measure our performance through systems like FPAL and unsolicited testimonials. Our proven track record of satisfied Clients is available on our Website.

Further information is available from your nearest EM&I office who will be pleased to discuss your particular needs.

Case Histories and References, demonstrating our capabilities and Client satisfaction, are available on our Website.

### Credentials

**Health & Safety** – EM&I has an outstanding HSE record and has been granted the RoSPA President's Award in recognition of winning eleven consecutive RoSPA Occupational Health & Safety Gold Awards including five Gold Medals and numerous other international awards.

Other safety awards include IFAP Safe Way Safety Achievement Awards and the Leith Offshore Safety Award.

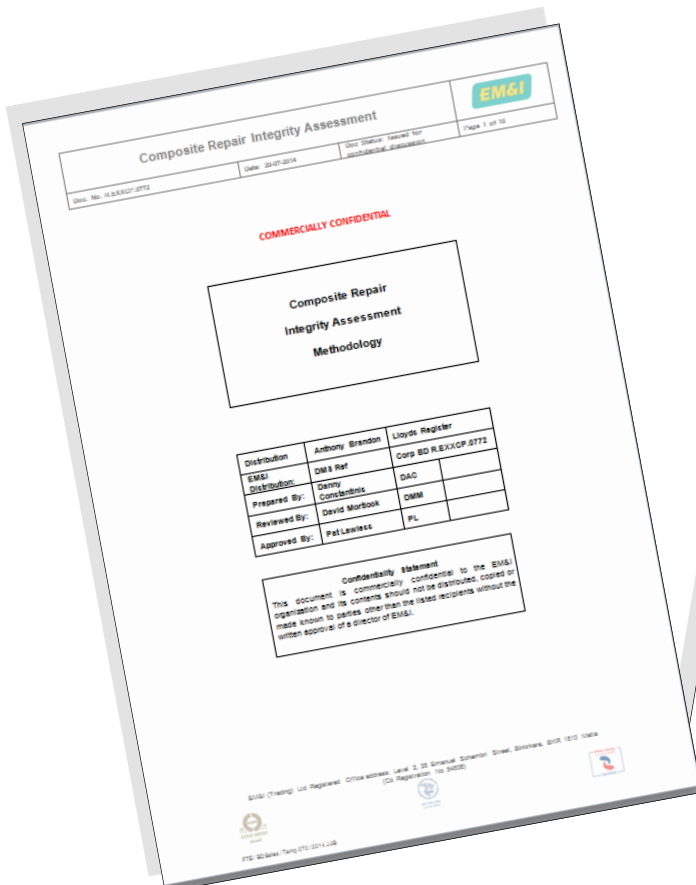
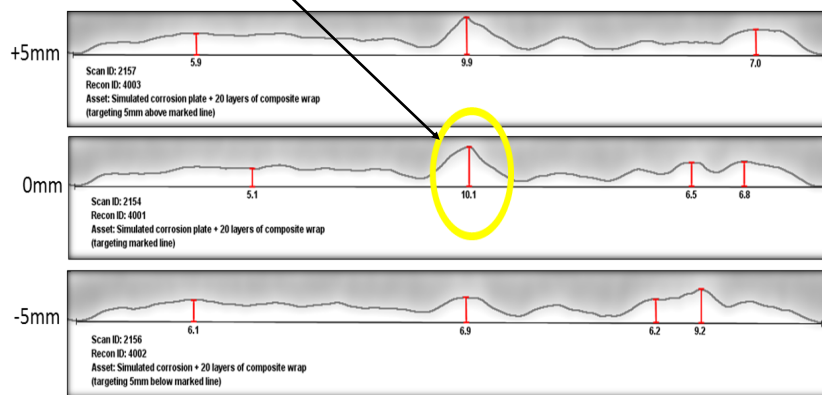
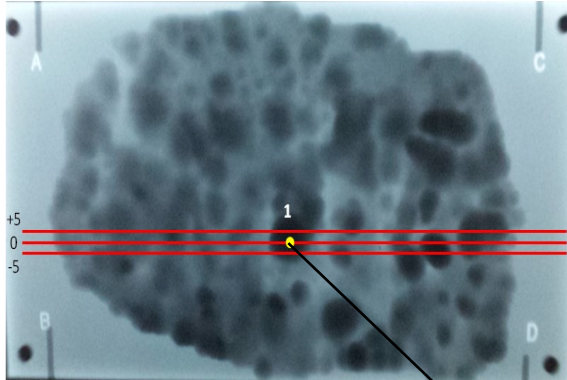
**Quality** – We assure quality through accredited ISO 9001 and ISO 17020 management systems and seek continuous improvement by measuring Client satisfaction through FPAL and regular Stewardship Reviews.

**Compliance** – EM&I's methods are approved by Classification Societies and accepted by regulators worldwide.

**Rope Access** – EM&I have been a Full Member of IRATA since its inception in the 1980s.

**HITS JIP** – EM&I have a leadership role in the Hull Inspection Techniques and Strategy (HITS) JIP whose members include Oil Majors, Classification Societies, Regulators, Lease Operators and service companies.





Visit our Website:- [www.emialliance.com](http://www.emialliance.com)

2018 WrapSight Leaflet

