



## Structural Management & Protection Services

### The Challenge

Structural integrity is a significant safety, environmental & business risk to the integrity of floating and fixed installations. There is increasing focus on hull structural integrity especially with the industry trend to extend the periods between drydocking.

### The Solution

EM&I have an holistic and proven solution to structural integrity management of floating and fixed installations.

#### Structural Integrity Management

- Structural Integrity Management Strategies
- Risk Based survey plans (above and below the waterline)
- Database set-up, population and management
- Structural surveys
- Repair & Renewal Plans
- Liaison with Class & Regulators
- Remedial Action Management & Site Supervision

#### Structural Repair & Maintenance

- Structural steel renewal capability (on station, above & below the water line)
- Specialised tools (IGLOO hot work habitats, TOPCAT work platforms)
- Multiskilled site teams

### The Benefits

Our comprehensive and innovative capability helps keep your assets structure fit-for-purpose and compliant for extended periods on site.

Experienced engineers who understand marine and offshore requirements develop practical and compliant worksopes while our multiskilled surveyors deliver accurate condition reports which provide recommendations for optimised Repair & Renewal Plans and Budgets.

EM&I has a proven track record of managing, supervising and safely executing major structural integrity programmes and repair projects.

### Track Record

We measure our performance through systems like FPAL and unsolicited testimonials. Our proven track record of satisfied Clients is available on our Website.

Further information is available from your nearest EM&I office who will be pleased to discuss your particular needs.

Case Histories and References, demonstrating our capabilities and Client satisfaction, are available on our Website.

### Credentials

**Health & Safety** – We assure Occupational Health & Safety through our ISO 45001 accredited Health & Safety Management System. EM&I has an outstanding HSE record and has been awarded twelve, consecutive, RoSPA Occupational Health & Safety Gold Awards including five Gold Medals and four President's Awards plus other international awards.

Other safety awards include a platinum IFAP Safe Way Safety Achievement Award in Australia and the Leith Offshore Safety Award.

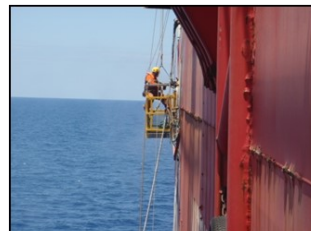
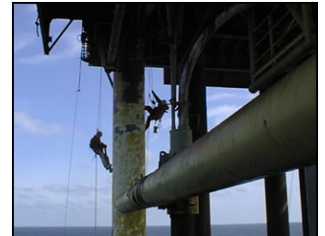
**Environmental** – We assure Environmental performance through our ISO 14001 accredited Environmental Management System.

**Quality** – We assure quality through our ISO 9001, ISO 17020 and ISO 17025 accredited Quality Management Systems and seek continuous improvement by measuring Client satisfaction through FPAL and regular Stewardship Reviews.

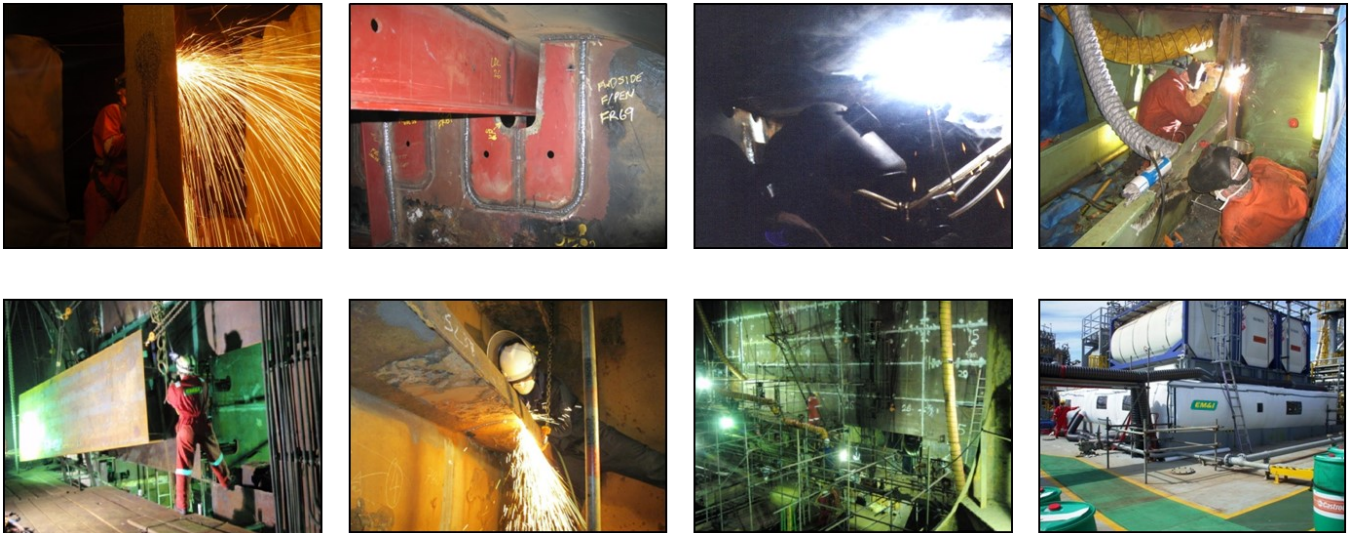
**Compliance** – EM&I's methods are approved by Classification Societies and accepted by regulators worldwide.

**Rope Access** – EM&I have been a Full Member of IRATA since its inception in the 1980s.

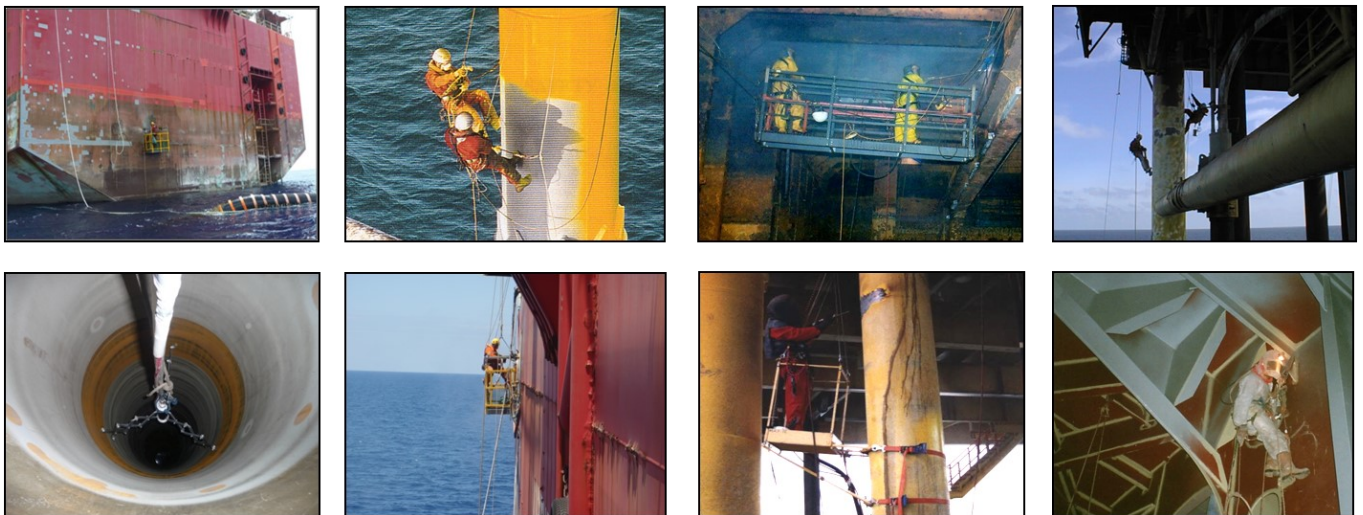
**HITS JIP** – EM&I have a leadership role in the Hull Inspection Techniques and Strategy (HITS) JIP whose members include Oil Majors, Classification Societies, Regulators, Lease Operators and service companies.



## Structural Repairs



## Coating Repairs



## Integrated Services

EM&I's proven technical and project management experience means we can successfully deliver complete projects thus letting you focus on your core business.

Our in-house service capability includes Asset Integrity Systems, Inspection, NDE, Maintenance & Repair, Corrosion Management, Cathodic Protection, Safety, Environmental and Engineering services.



Visit our Website:- [www.emialliance.com](http://www.emialliance.com)

