



## MODUs

### The Challenge

Mobile Offshore Drilling Units (MODUs) include semi-submersible, jack-up and drill ship assets. Many MODUs are complex, high value assets and often have to operate for extended periods on station.

Ensuring safe operations and complying with Class and regulatory requirements while avoiding off-hire time and keeping costs optimised poses many challenges for drilling companies.

### The Solution

EM&I's unparalleled marine, offshore and drilling experience has resulted in a unique range of asset integrity services designed to keep MODUs on station for extended periods and on-hire, safely and at lower cost.

The ODIN® diverless UWILD system is accepted by the major class societies and regulators and minimises off-hire time for underwater inspections of drill ships and semi-submersibles as well as spud-can inspections on jack-ups.

The NoMan® system allows for tanks, pontoons, moonpools and other confined spaces to be inspected without man entry, using remote cameras and specialised inspection ROVs, thus reducing cost and enabling continued operations with full ballast tanks where required.

EM&I's multi-skilled teams can carry out ODIN UWILDs and NoMan tank inspections in a single campaign saving the cost of multiple mobilisations and making best use of weather or operational downtime.

Our ability to work with class to develop RBI based long term plans results in an efficient and flexible Inspection Plan that is compliant and uses fleet experience to reduce overall costs.

The EXI™ Ex Equipment inspection system uses multi-skilled COMPEX certified technicians to minimise equipment strip down and costs.

Our PSI™ is a world leading RBI based service for pressure systems that uses the latest high tech inspection methods such as RTR and BCT to manage CUI and non-intrusive vessel inspections.



### The Benefits

Reduced Off-hire Time, Reduced Cost, Improved Safety, Reduced POB, Global Delivery Capability, Fully Class Compliant.

EM&I's innovative methodologies, RBI strategies, global spread and over 30 years of experience delivers a unique integrity package that eliminates off-hire time and reduces overall cost wherever you operate in the world.

### Track Record & Testimonials

We measure our performance through systems like FPAL and unsolicited testimonials. Our proven track record of satisfied Clients is available on our Website.

Further information is available from your nearest EM&I office who will be pleased to discuss your particular needs. Case Histories and References, demonstrating our capabilities and Client satisfaction, are available on our Website.

### Credentials

**Health & Safety** – We assure Occupational Health & Safety through our ISO 45001 accredited Health & Safety Management System. EM&I has an outstanding HSE record and has been awarded twelve, consecutive, RoSPA Occupational Health & Safety Gold Awards including five Gold Medals and four President's Awards plus other international awards. Other safety awards include a platinum IFAP Safe Way Safety Achievement Award in Australia and the Leith Offshore Safety Award.

**Environmental** – We assure Environmental performance through our ISO 14001 accredited Environmental Management System.

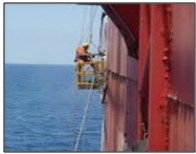
**Quality** – We assure quality through our ISO 9001, ISO 17020 and ISO 17025 accredited Quality Management Systems and seek continuous improvement by measuring Client satisfaction through FPAL and regular Stewardship Reviews.

**Compliance** – EM&I's methods are approved by Classification Societies and accepted by regulators worldwide.

**Rope Access** – EM&I have been a Full Member of IRATA since its inception in the 1980s.

**HITS JIP** – EM&I have a leadership role in the Hull Inspection Techniques and Strategy (HITS) JIP whose members include Oil Majors, Classification Societies, Regulators, Lease Operators and service companies.

## 'No Drydock....Safely'



**Corrosion Protection**



**HAE Management**



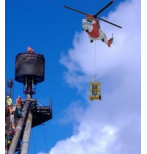
**Pressure System IRM**



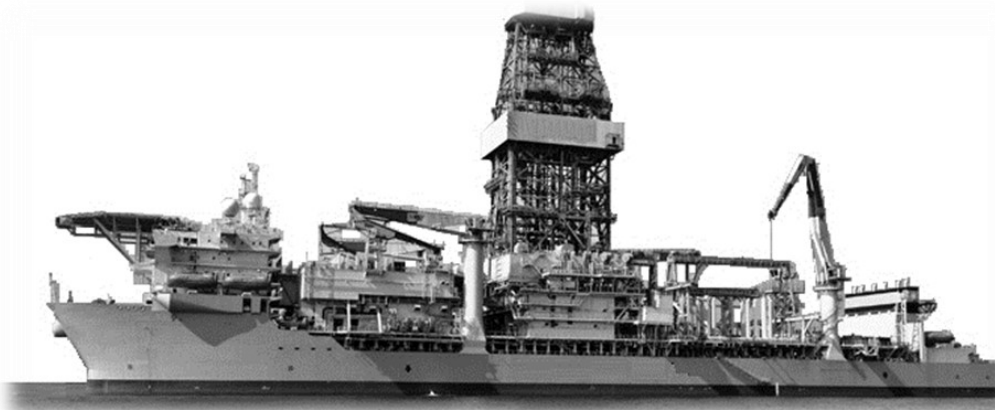
**Structural Inspection**



**Flare IRM**



**Piping / Vessel R&M**



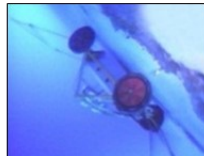
**Structural R&M**



**Integrity / Compliance System**



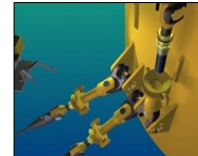
**In-Water Corrosion Protection**



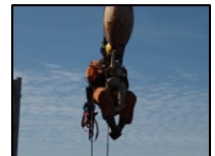
**In-Water Inspection**



**In-Water Structural R&M**



**Moorings**



**Lifting Gear**

## Integrated Asset Integrity

### Integrated Services

EM&I's proven technical and project management capability means we can deliver complete projects letting you focus on your core business.

Our in-house service capability includes Asset Integrity Systems, Inspection, NDE, Maintenance & Repair, Corrosion Management, Cathodic Protection, Safety, Environmental and Engineering services.



Visit our Website:- [www.emialliance.com](http://www.emialliance.com)

